

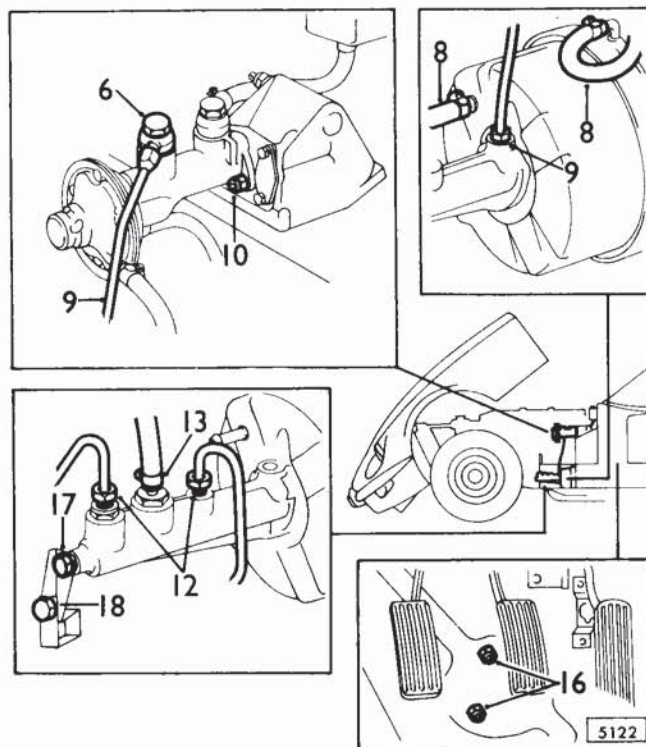
SERVO ASSEMBLY

Left hand steering – remove and refit

70.50.01

Removing

1. Disconnect battery – 86.15.19.
2. Remove reservac tank – 70.50.04.
3. Remove windscreen washer reservoir and bracket – 84.10.01 – 84.10.02.
4. Remove servo fluid reservoir – 70.30.17.
5. Remove left hand air cleaner – 19.10.01.
6. Remove banjo bolt from master cylinder outlet. Temporarily replace bolt to retain trap valve assembly
7. Remove petrol pipe clip and pull off flexible hose.
8. Disconnect air hoses at servo.
9. Release connector and remove pipe.
10. Remove two nyloc nuts securing brake master cylinder to pedal box studs.
11. Draw master cylinder from studs. Disengage push rod, and suspend master cylinder beneath rear carburetter using soft wire loops.
12. Release two connectors on slave cylinder. Plug each pipe to prevent fluid loss.
13. Remove fluid feed hose from top of slave cylinder.
14. Inside vehicle, pull carpet from left hand front toeboard.
15. Remove insulation material.
16. Remove three nyloc nuts and plain washers.
17. Under bonnet, release setscrew and shakeproof washer at bracket on front of slave cylinder.
18. Loosen setscrew, nut and plain washer securing bracket to clip.
19. Draw servo from bulkhead and manoeuvre clear.



Refitting

20. Fit polyurethane washers to servo studs.
21. Manoeuvre servo into position, and pass studs through bulkhead.
22. Secure bracket to front of slave cylinder with one setscrew and shakeproof washer.
23. Tighten setscrew, nut and plain washer.
24. Fit plain washer and nyloc nut to each servo stud.
25. Fit fluid feed hose to top of slave cylinder.
26. Fit front two connectors to slave cylinder.
27. Release master cylinder.
28. Pass push rod through rubber boot and engage flange with two studs on pedal box.
29. Secure with two nyloc nuts.
30. Fit master cylinder output pipe between banjo connector and rear connector on slave cylinder.
31. Fit air hoses to servo.

CAUTION: Ensure correct connections made.

32. Fit flexible petrol hose to pipe at bulkhead and make new connection.
33. Fit servo fluid reservoir.
34. Fit windscreen washer reservoir and bracket.
35. Fit reservac tank.
36. Fill servo fluid reservoir to correct level.
37. Bleed brakes – 70.25.02.
38. Connect battery.
39. Fit insulation material at toeboard.
40. Fit carpet.

