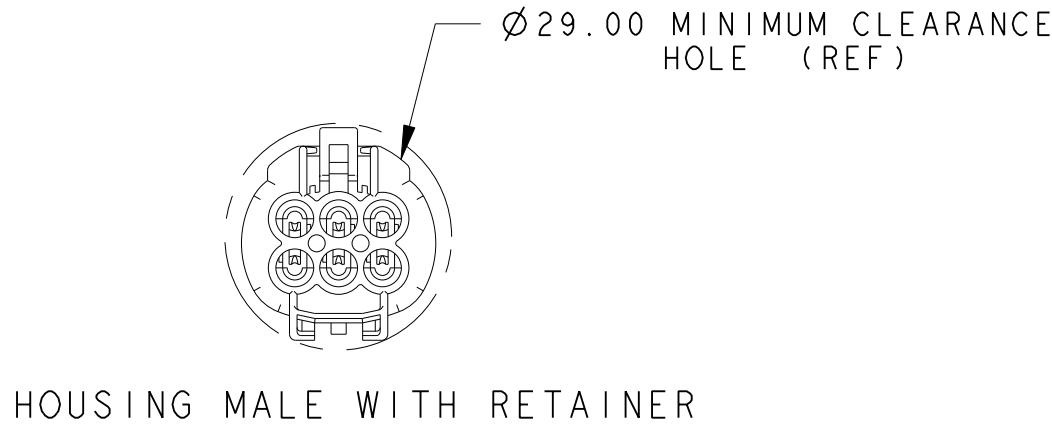
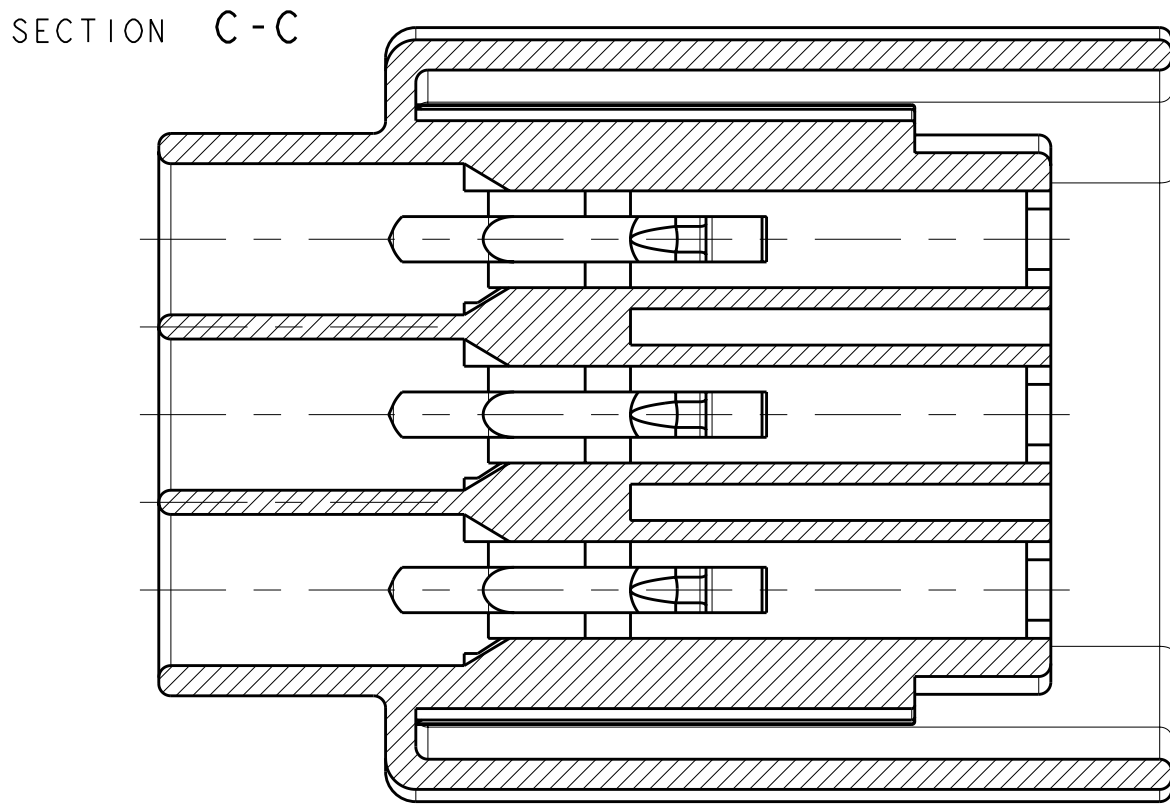


LOC	DIST	REV	DESCRIPTION	DATE	BY	APP
1	-	-				
A1	EG00-2683-01			07FEB2002	CLD	JE
A2	EG00-3105-01, DRW REVISED, SEALS UPDATED			07FEB2002	SS	JE
A3	EG00-0399-02, ADD NATURAL VERSION			07FEB2002	CLD	JE
A4	REDRAWN REVISED FOR ECR06-003008			21FEB2006	M.P.	R.M.
A5	REDRAWN FOR ECR-08-011583			16MAY2008	D.S.	R.M.

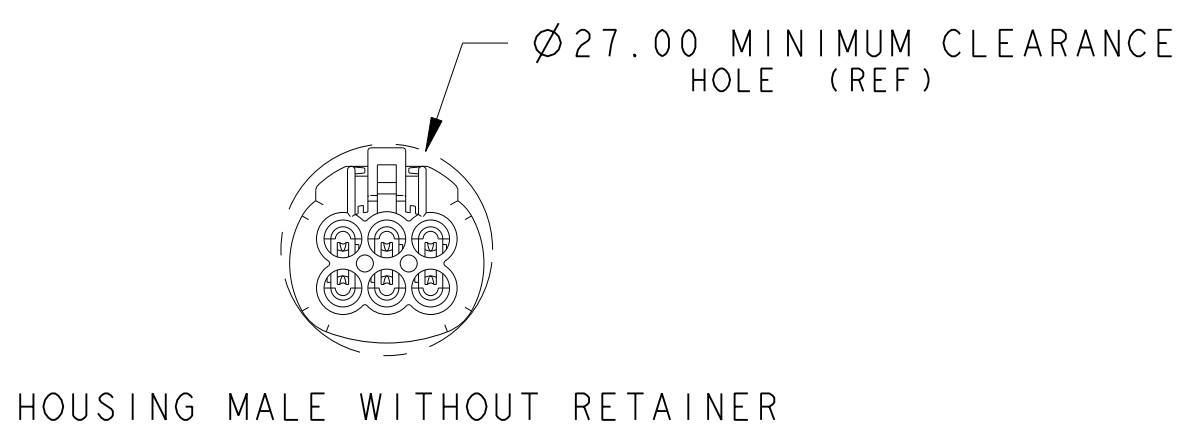
HOUSING

WATERPROOF / NON WATERPROOF



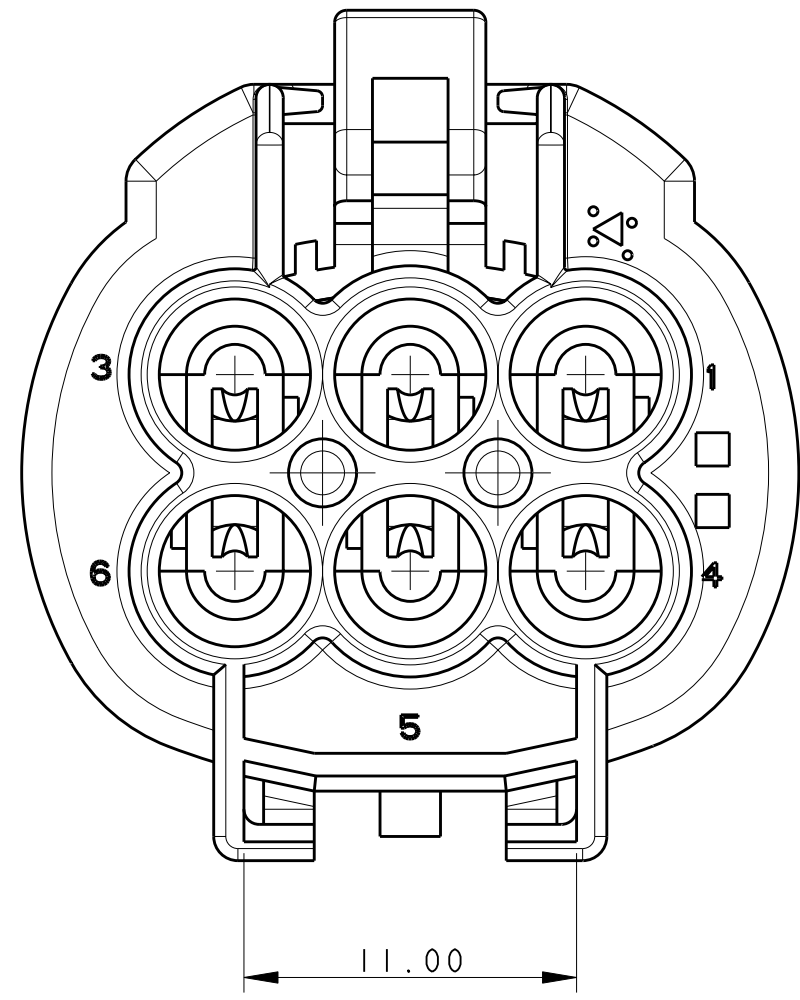
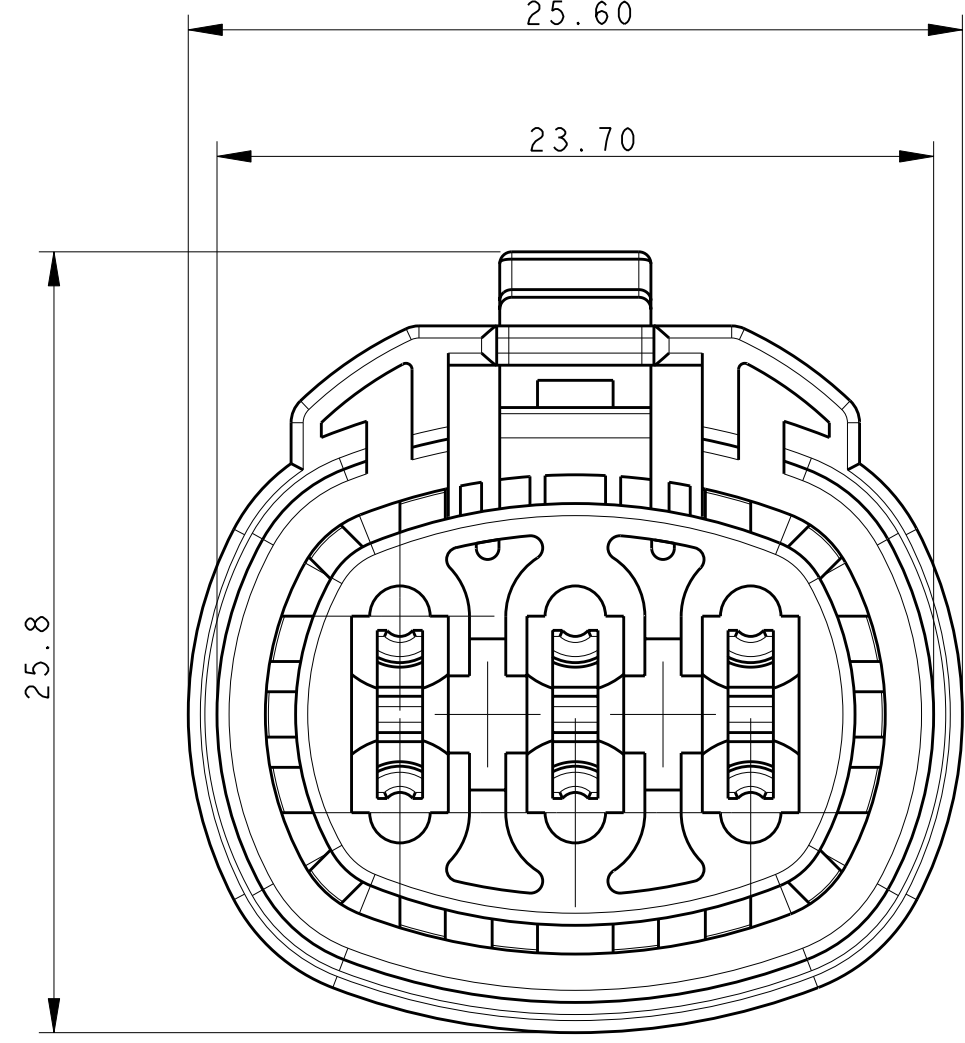
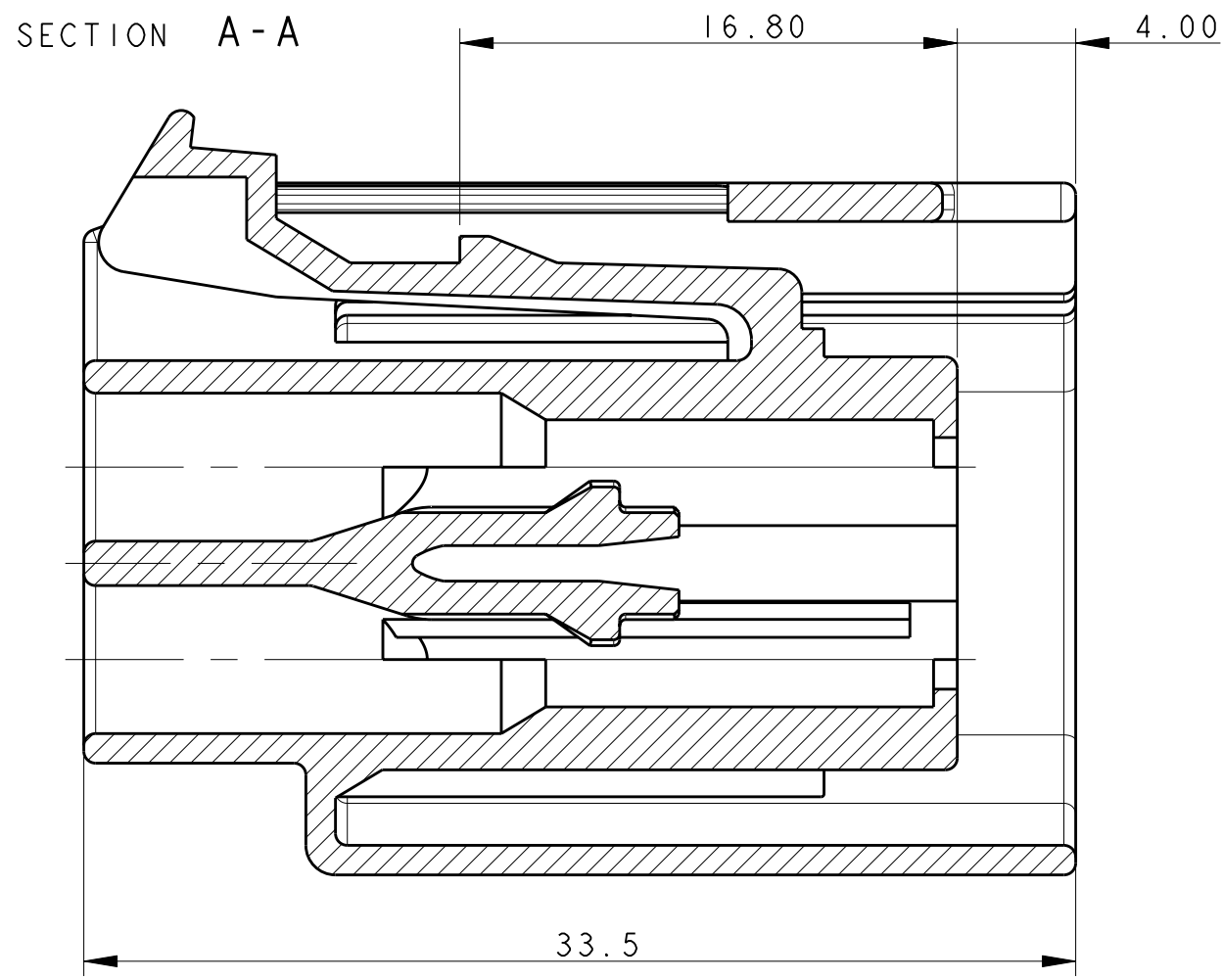
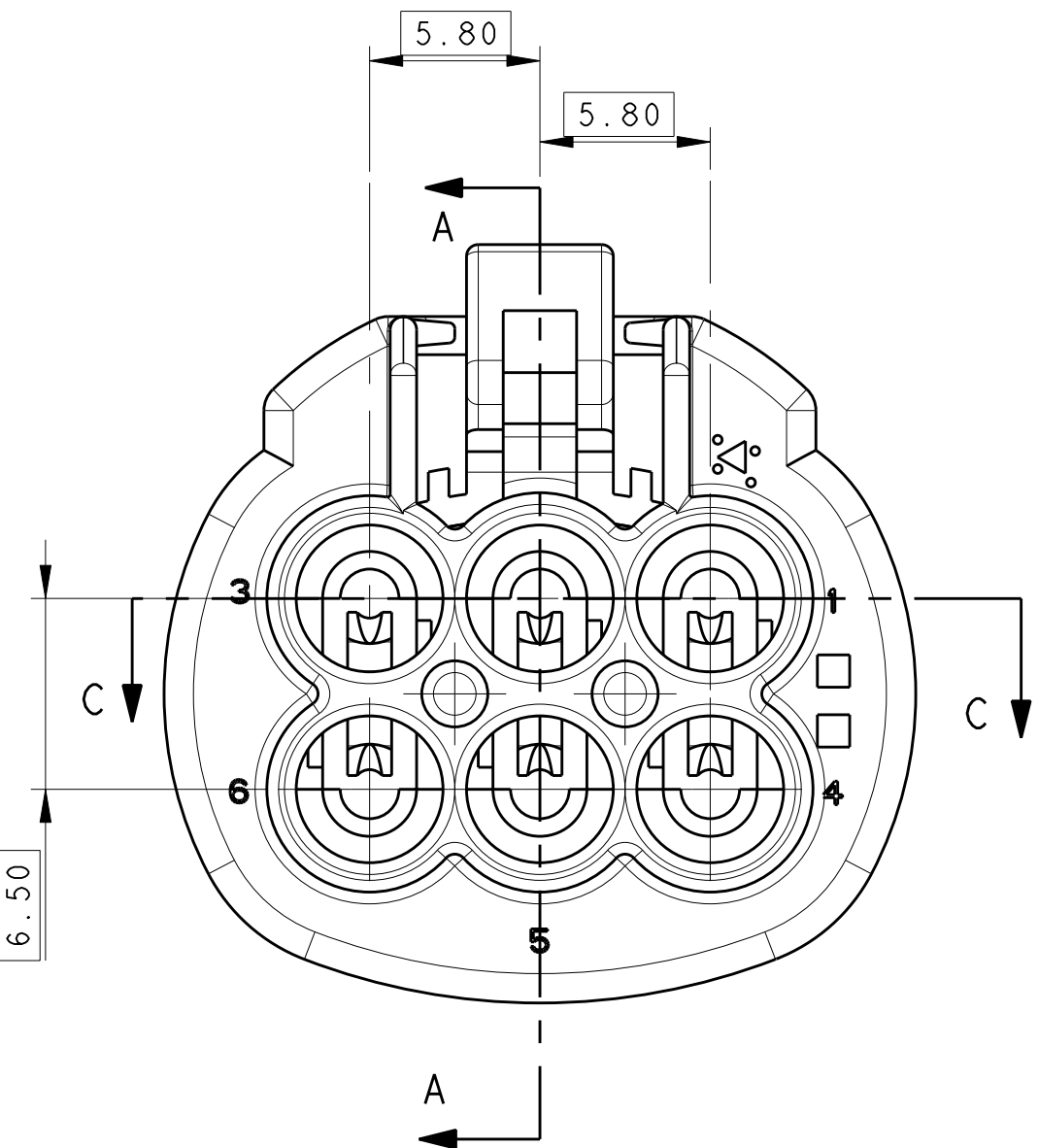
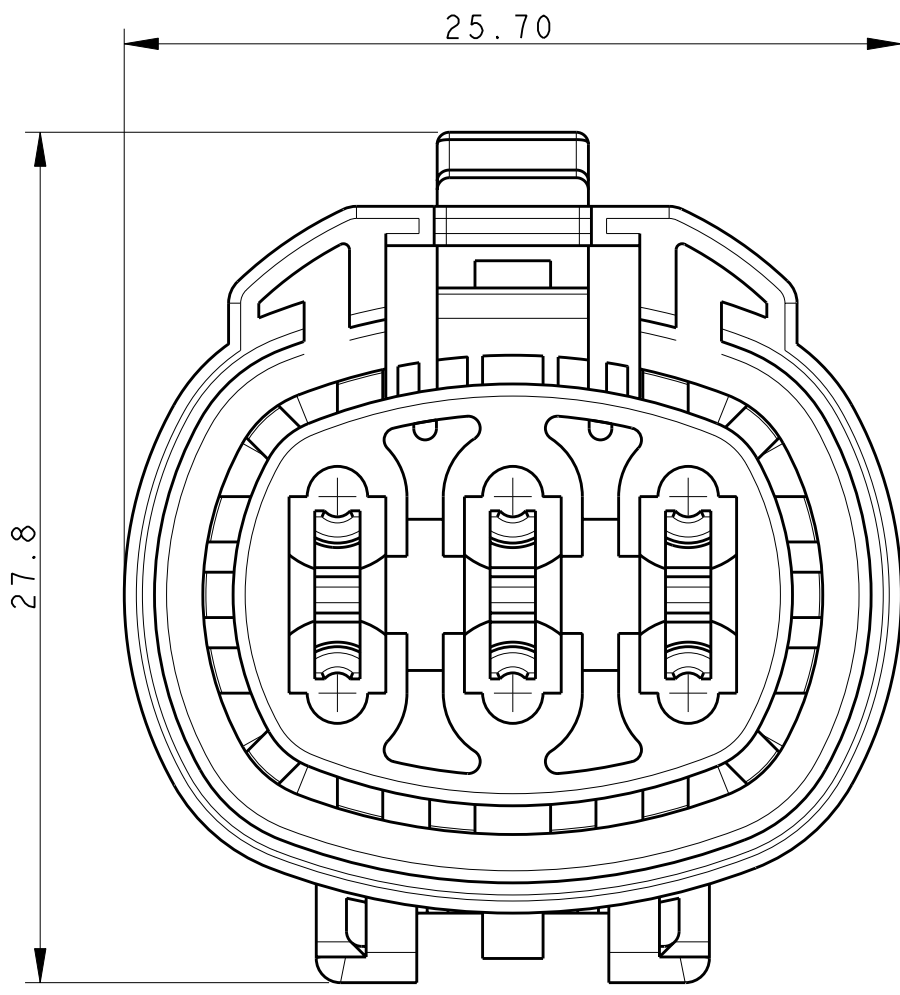
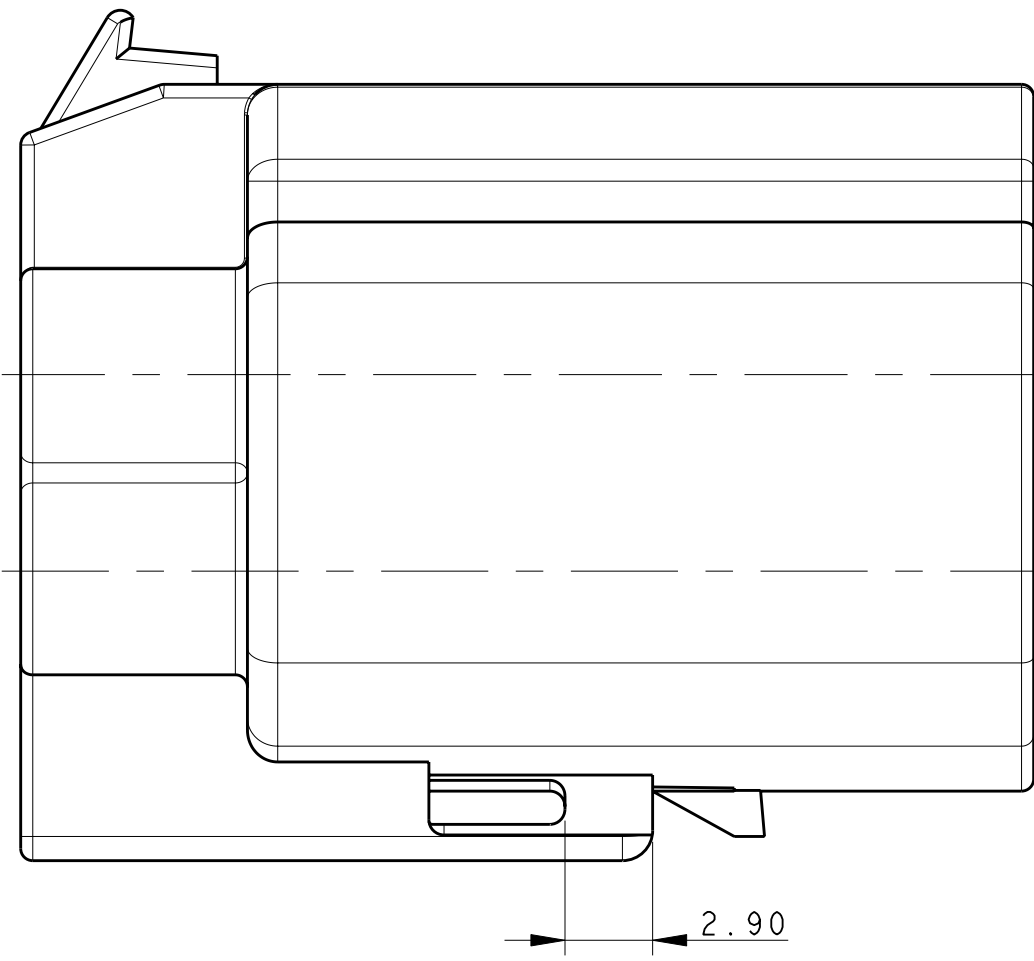
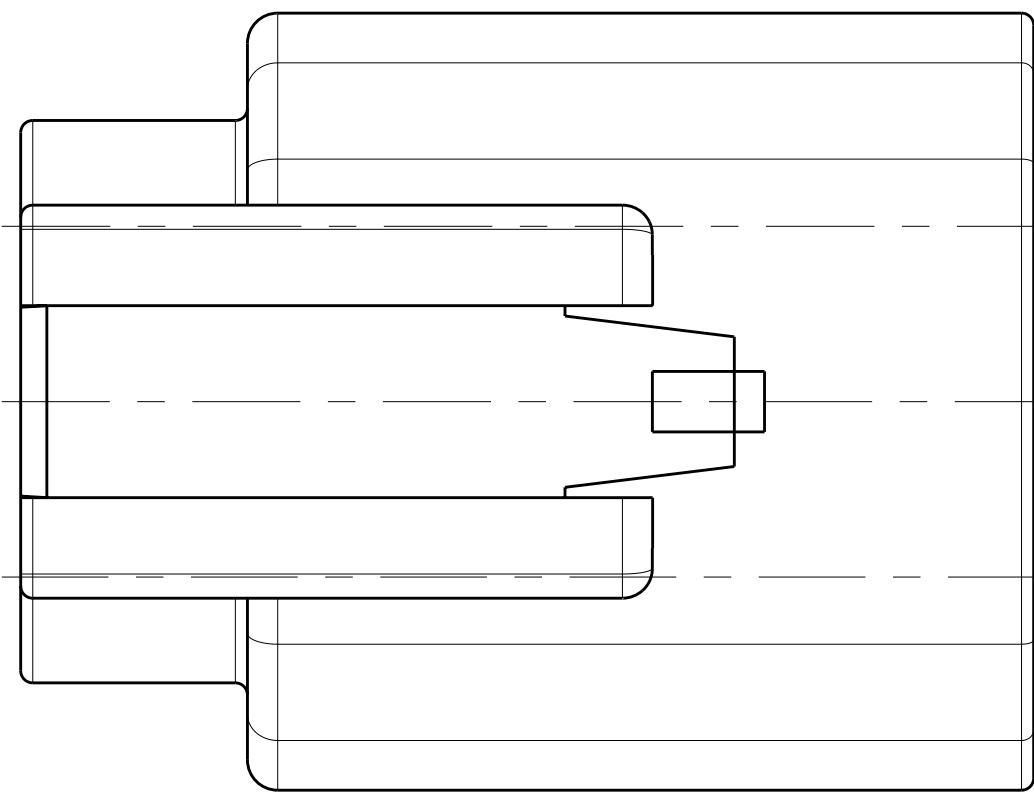
FULL SIZE VIEWS

SCALE 1.000

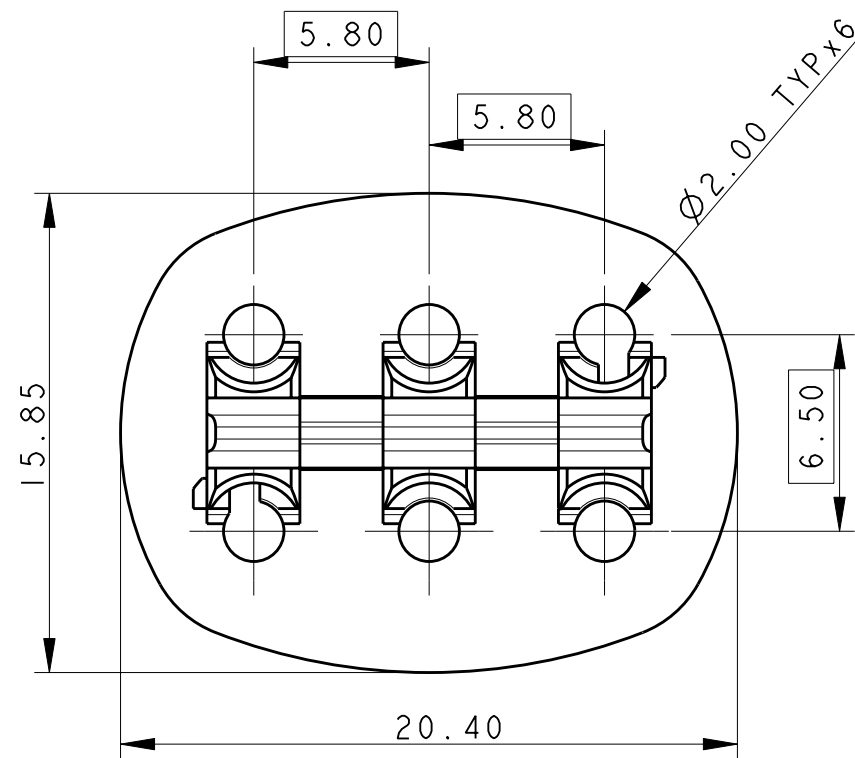


HOUSING WITH RETAINER

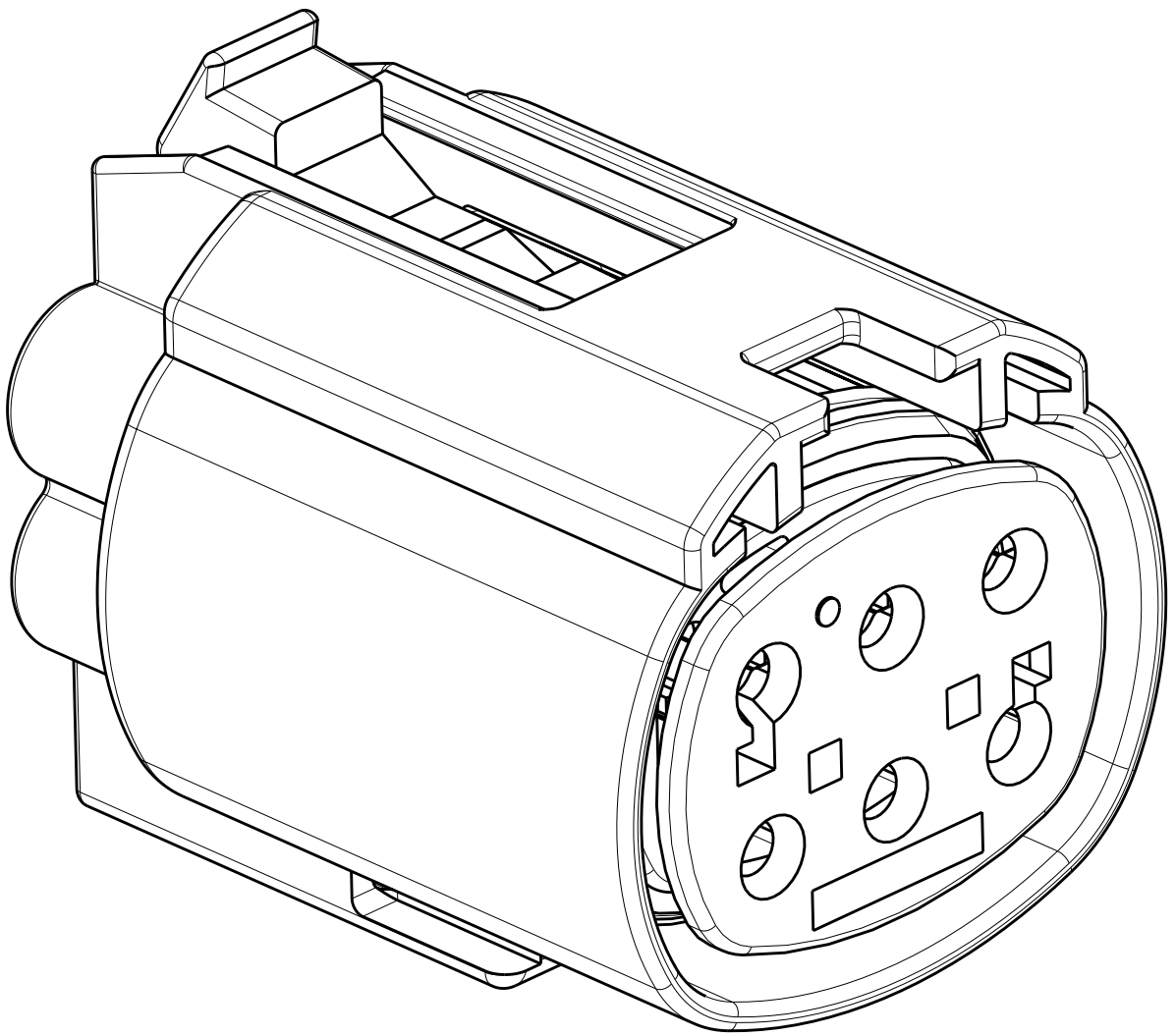
WATERPROOF / NON WATERPROOF



SPACER NOTES



						DESCRIPTION	ITEM
	I		I			HOUSING WITH RETAINER (BLACK)	1
I		I				HOUSING WITHOUT RETAINER (BLACK)	1
				I	I	HOUSING WITH RETAINER (NATURAL)	1
				I	I	HOUSING WITHOUT RETAINER (NATURAL)	1
I	I			I		SEAL (REDDISH BROWN)	2
I	I			I		SPACER (LIGHT BLUE)	3
						SPACER (RED)	3
4-1437710-0 REVA	4-1437710-1 REVA	4-1437710-2 REVA	4-1437710-3 REVA	4-1437710-4 REVA	0-1418093-1 REVA	0-1418093-2 REVA	0-1418093-3 REVA



- NOTES UNLESS OTHERWISE SPECIFIED:
- SEE CHART FOR MATING PART NUMBERS.
 - THE CONNECTOR WITH RETAINER MOUNTING FEATURE IS DESIGNED TO PASS THROUGH A Ø 29.00mm MIN. HOLE AND WITHOUT RETAINER MOUNTING FEATURE THROUGH A Ø27.00mm MIN HOLE.

PART AS SUPPLIED				COMPONENTS			COLOURS			MATERIALS		
TYCO ELECTRONICS PART No.	DESCRIPTION	WATERPROOF	WEIGHT	1 HOUSING	2 SPACER	3 SEAL	1 HOUSING	2 SPACER	3 SEAL	1 HOUSING	2 SPACER	3 SEAL
4-1437710-0	6 WAY MALE CONNECTOR	YES	10.0 gr.	I	I	I	LIGHT BLUE	REDDISH BROWN		PBTP 33% GF	PBTP 33% GF	SILICONE ELASTOMER
4-1437710-1	6 WAY MALE CONNECTOR WITH RETAINER		10.8 gr.	I	I	I						
4-1437710-2	6 WAY MALE CONNECTOR	NO	9.8 gr.	I	I		BLACK	RED		PBTP 33% GF	PBTP 33% GF	SILICONE ELASTOMER
4-1437710-3	6 WAY MALE CONNECTOR WITH RETAINER		10.6 gr.	I	I							

SUITABLE FOR		
TERMINAL FEMALE	WIRE SEAL	BLIND PLUG
0-1437709-9 (0.22-0.35mm ²) GOLD PLATED 1-1437709-0 (0.50-1.00mm ²) GOLD PLATED 1-1437709-7 (1.50mm ²) GOLD PLATED 1-1437709-4 (0.22-0.35mm ²) TIN PLATED 1-1437709-5 (0.50-1.00mm ²) TIN PLATED 1-1437709-6 (1.50mm ²) TIN PLATED	1-1437713-1 (0.22-0.35) BLACK 1-1437713-2 (0.50-1.00) RED 1-1437713-3 (1.50) BLUE	1-1437713-4
0-1437709-9 (0.22-0.35mm ²) GOLD PLATED 1-1437709-0 (0.50-1.00mm ²) GOLD PLATED 1-1437709-7 (1.50mm ²) GOLD PLATED 1-1437709-4 (0.22-0.35mm ²) TIN PLATED 1-1437709-5 (0.50-1.00mm ²) TIN PLATED 1-1437709-6 (1.50mm ²) TIN PLATED		1-1437713-4

MATING PARTS	
TYCO ELECTRONICS PART No.	DESCRIPTION
2-1437712-0	6 WAY FEMALE CONNECTOR WATERPROOF
2-1437712-0	6 WAY FEMALE CONNECTOR NON WATERPROOF

PART AS SUPPLIED				COMPONENTS			COLOURS			MATERIALS		
TYCO ELECTRONICS PART No.	DESCRIPTION	WATERPROOF	WEIGHT	1 HOUSING	2 SPACER	3 SEAL	1 HOUSING	2 SPACER	3 SEAL	1 HOUSING	2 SPACER	3 SEAL
0-1418093-3	6 WAY MALE CONNECTOR	YES	10.0 gr.	I	I	I	NATURAL	LIGHT BLUE	REDDISH BROWN	PBTP 33% GF	PBTP 33% GF	SILICONE ELASTOMER
4-1437710-4	6 WAY MALE CONNECTOR WITH RETAINER		10.8 gr.	I	I	I						
0-1418093-1	6 WAY MALE CONNECTOR	NO	9.8 gr.	I	I		NATURAL	RED		PBTP 33% GF	PBTP 33% GF	SILICONE ELASTOMER
0-1418093-2	6 WAY MALE CONNECTOR WITH RETAINER		10.6 gr.	I	I							

SUITABLE FOR		
TERMINAL FEMALE	WIRE SEAL	BLIND PLUG
0-1437709-9 (0.22-0.35mm ²) GOLD PLATED 1-1437709-0 (0.50-1.00mm ²) GOLD PLATED 1-1437709-7 (1.50mm ²) GOLD PLATED 1-1437709-4 (0.22-0.35mm ²) TIN PLATED 1-1437709-5 (0.50-1.00mm ²) TIN PLATED 1-1437709-6 (1.50mm ²) TIN PLATED	1-1437713-1 (0.22-0.35) BLACK 1-1437713-2 (0.50-1.00) RED 1-1437713-3 (1.50) BLUE	1-1437713-4
0-1437709-9 (0.22-0.35mm ²) GOLD PLATED 1-1437709-0 (0.50-1.00mm ²) GOLD PLATED 1-1437709-7 (1.50mm ²) GOLD PLATED 1-1437709-4 (0.22-0.35mm ²) TIN PLATED 1-1437709-5 (0.50-1.00mm ²) TIN PLATED 1-1437709-6 (1.50mm ²) TIN PLATED		1-1437713-4

MATING PARTS	
TYCO ELECTRONICS PART No.	DESCRIPTION
2-1437712-1	6 WAY FEMALE CONNECTOR WATERPROOF
2-1437712-1	6 WAY FEMALE CONNECTOR NON WATERPROOF

Mouser Electronics

Authorized Distributor

Click to View Pricing, Inventory, Delivery & Lifecycle Information:

[TE Connectivity:](#)

[4-1437710-0](#)