

NOTE: THE CONNECTIONS ARE SHOWN FOR EACH WARNING LAMP, ABOVE AND BELOW THE SYMBOL.

THE BASIS OF THIS DRAWING IS THE INSTRUMENT CLUSTER FROM MY 1979 PRE HE XJ-S COUPE. THERE MAY BE SOME ERRORS IN THE DETAIL. THIS HAD A MECHANICAL SPEEDO, BUT I NEEDED AN ELECTRONIC SPEEDO AS USED IN LATER HE CARS. TO DO THIS I BOUGHT A SECONDHAND COMPLETE CLUSTER FROM AN HE CAR OF UNKNOWN YEAR. THE HE CLUSTER PRINTED CIRCUIT BOARD CONNECTION WISE LOOKS EXACTLY THE SAME AS THE PRE HE, WITH THE ADDITION OF CONNECTIONS FOR AN ELECTRONIC SPEEDO. THERE IS A SLIGHT DIFFERENCE IN THE SHAPE OF THE HE CIRCUIT BOARD NEAR THE SPEEDO.

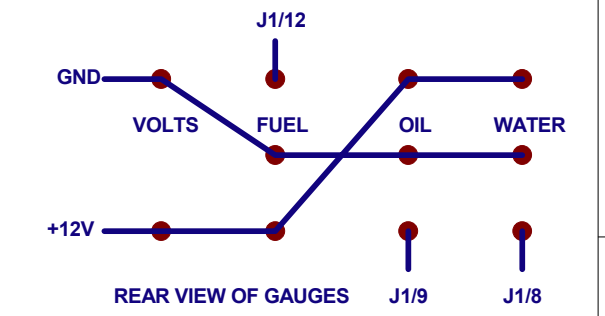
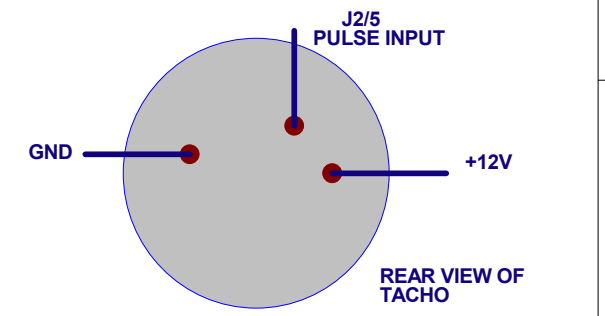
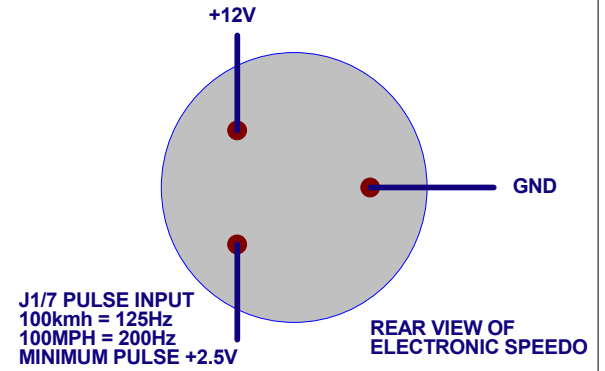
THE HE CLUSTER HAS DIFFERENT SYMBOLS FOR THE WARNING LAMPS, AND DIFFERENT FUNCTIONS IN SOME CASES. THE COLOUR CODE OF WIRING TO THE J1 AND J2 CONNECTORS WILL NOT ALL BE SIMILAR.

ON THE PRE HE J1 AND J2 CONNECTOR WIRING THE "WL" SIGNIFIES CONNECTION TO A WARNING LAMP. I USED THE HE CLUSTER FOR MY PRE HE CAR, BUT CHANGED OVER THE MOULDING WITH THE WARNING LAMP SYMBOLS TO MATCH THE WIRING IN THE PRE HE CAR.

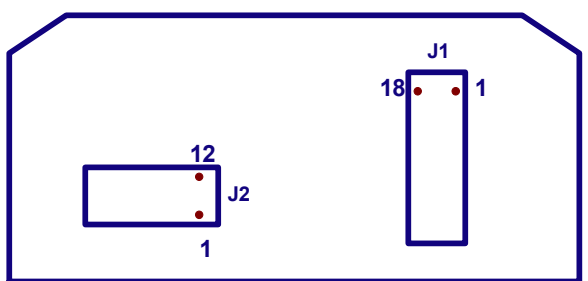
THE WARNING LAMPS DRAW 90mA EACH @ 12V, NOMINAL 1W RATING. THE ILLUMINATION LAMPS DRAW 180mA @ 12V, NOMINAL 2W RATING.

THESE WIRE COLOURS ONLY AS FOUND ON 1979 PRE HE

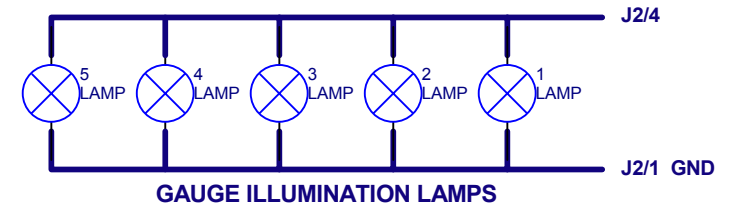
Label	Wire Colour	Pin	Label	Wire Colour	Pin
WL OVER VOLTAGE	RB RED/BLACK	18	UW BLUE/WHITE		1
WL LOW COOLANT	WU WHITE/BLUE	17	RY RED/YELLOW		2
WL BRAKE FLUID LEVEL	BY BLACK/YELLOW	16	BW BLACK/WHITE		3
WL OIL PRESSURE	BN BLACK/BROWN	15	LGN GREEN/BROWN		4
WL PARK BRAKE	BW BLACK/WHITE	14	WG WHITE/GREEN		5
SEAT BELT LOOP	P PURPLE	13			6
FUEL GAUGE	LGO GREEN/ORANGE	12	Y OR W/Y		7
SEAT BELT LOOP	OG ORANGE/GREEN	11	GU GREEN OR GREEN/BLUE		8
WL PARK LAMP FAIL	WS WHITE/SLATE	10	WN WHITE/BROWN		9
WL STOP	GW GREEN/WHITE	12	B BLACK		1
WL IGNITION	NB BROWN/BLACK	11			2
WL LOW FUEL	NK BROWN/PINK	10	G GREEN		3
+12V FROM IGN SWITCH FOR WARNING LAMPS ONLY	W WHITE	9	RW RED/WHITE		4
		8	WUS WHITE/BLUE SPIRAL		5
			GR GREEN/RED		6
WL HAZARD	GU GREEN/BLUE	7			



GAUGE TEST: SUGGEST PUTTING A SOLDER TAG OR PIECE OF WIRE BEHIND VOLTMETER SCREWS, AND ATTACH 12V SUPPLY OR BATTERY. USE 100ohm RESISTOR TO GROUND ON EACH GAUGE. FUEL GAUGE READS ABOUT 1/3 OF MAXIMUM. OIL PRESSURE READS ABOUT 1/2 MAXIMUM. WATER READS ABOUT 1/3 MAXIMUM.



REAR VIEW OF INSTRUMENT CLUSTER



GAUGE ILLUMINATION LAMPS

XJ-S INSTRUMENT CLUSTER NOT FACELIFT

FILE: SHEET: 1 REV: 1.0 8-May-2012

RED PHASE INSTRUMENTS