

INTRODUCTOR

On the fixed head and drop head coupe models, the control unit is mounted centrally in an aperture in lower half of the facia panel, normally occupied by a map drawer.

On the open sports model, the control unit is mounted on the centre line of the car below the instrument panel.

On all models, the power amplifier unit is mounted in the luggage boot compartment. The loudspeaker is mounted behind the left-hand scuttle trim panel on right-hand drive, and behind the right-hand scuttle trim panel on left-hand drive cars.

A whip type aerial is mounted in the drive side front wing.

AERIAL MOUNTING

1. Remove under-scuttle casing.
2. Remove bonnet release control, and drive side scuttle trim panel.
3. Clean to bare metal around hole in side body support, used for mounting eyebolt assembly.
4. Mark out and drill $\frac{7}{8}$ " diameter hole in drive side front wing. See Fig. 1.

NOTE : It is suggested that a $\frac{5}{16}$ " diameter pilot hole be drilled in the wing to the dimensions given, and the mast mounted in position without wing grommet. An indication of the direction in which the hole must be "drawn" can be obtained, to effect an upright mounting of the aerial.

5. Fit insulating grommet provided in the 1" dia. hole at top of side body support. Secure aerial and lead in to body and tighten down eyebolt assembly.

NOTE : Hole is oversize to give adjustment, a large diameter dished washer is provided for mounting eyebolt assy.

6. Route aerial lead-in over steering column, behind instrument panel to Control Unit location.

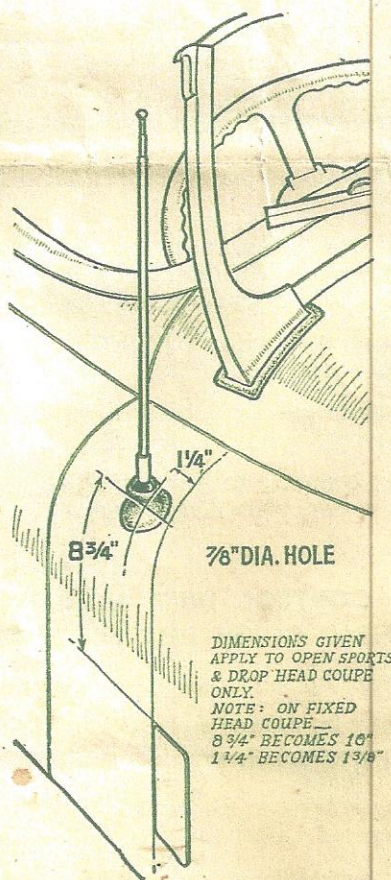


Fig. 1A.

CONTROL UNIT MOUNTING (OPEN SPORTS)

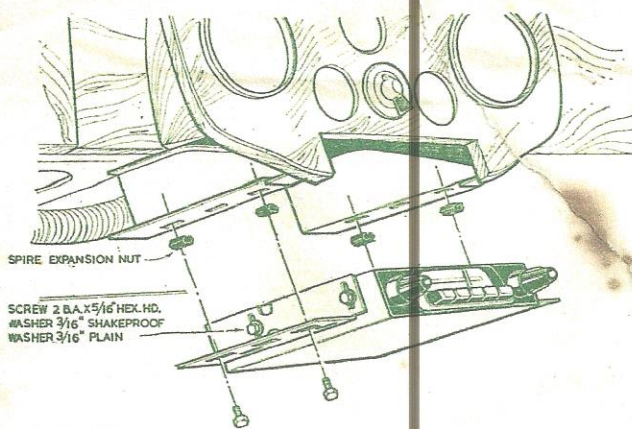


Fig. 2B

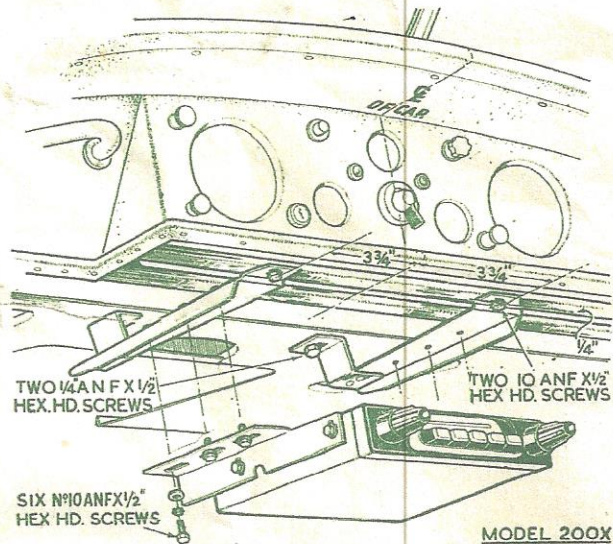


Fig. 2A

CONTROL UNIT MOUNTING (OPEN SPORTS)

1. Mark out and drill two $\frac{7}{32}$ " dia. holes in lower flange of instrument panel as shown in Fig. 2 (a).
2. Secure support brackets to panel using two No. 10 ANF x $\frac{1}{2}$ " Hex. Hd. screws, shakeproof washers and nuts. With brackets at right angles to instrument panel, drill two $\frac{9}{32}$ " dia. holes in scuttle panel for rear fixing of brackets.
3. Secure brackets to scuttle with two $\frac{1}{4}$ " ANF x $\frac{1}{2}$ " Hex. Hd. screws, plain and shakeproof washers and nuts.
4. Secure Control Unit to mounting brackets with the four 2BA x $\frac{3}{8}$ " Hex. Hd. screws, plain and shakeproof washers provided.
5. Attach control unit complete with mounting bracket to support brackets with six No. 10 ANF x $\frac{1}{2}$ " screws, plain and shakeproof washers. See Fig. 2 (a).

CONTROL UNIT MOUNTING (DROP HEAD COUPE AND FIXED HEAD COUPE)

1. Unscrew map drawer stop and remove map drawer complete.
2. Remove drawer slides from fascia supports.

NOTE: Fixings should be retained.

3. Assemble mounting bracket to Control Unit with the four 2BA x $\frac{3}{8}$ " Hex. Hd. screws, plain and shakeproof washers.
4. Fit bracket complete with Control Unit to support bracket. See Fig. 2(b).

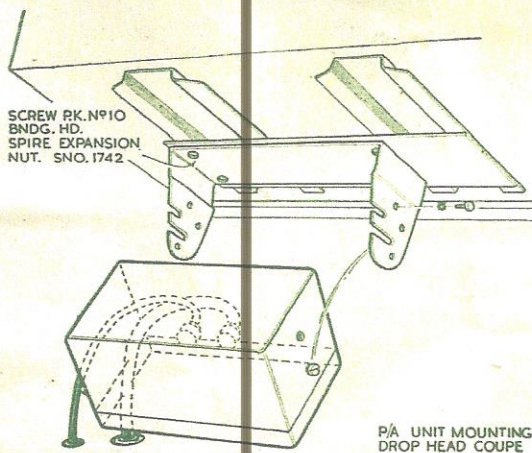


Fig. 3A

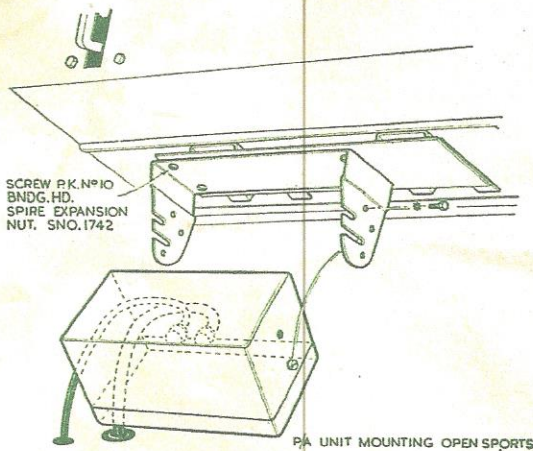


Fig. 3B

1. Secure P/A Unit mounting bracket to fixing plate provided in car, with four PK screws No. 10 x $\frac{3}{8}$ " Bdg. Hd. and four spire expansion nuts.

The four spire nuts are pushed into four slots provided in fixing plate. See Fig. 3(a) or 3(b), according to car model.

2. Secure P/A unit to bracket with fixings provided.

3. Route interconnecting and loudspeaker leads through floor of luggage compartment, through heel board and along transmission tunnel to Control Unit location.

NOTE: Plugged holes are provided in the floor of luggage compartment and in heel board for passage of leads. Grommets provided on leads must be fitted to replace plugs. Clip cables to side of transmission tunnel with clips provided. See Fig. 4.

4. Plug interconnecting lead into Control Unit.

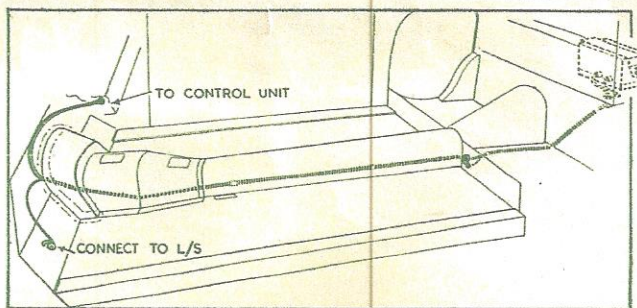


Fig. 4

LOUDSPEAKER MOUNTING

1. Fit grille material behind passenger's side scuttle trim panel with four bifurcated rivets provided.

NOTE: An aperture in panel is semi-pierced and can be pushed out. Trim cloth should be cut and trimmed around edges of aperture securing with suitable adhesive.

2. Secure loudspeaker lead to loudspeaker.

3. Attach loudspeaker complete with card ring to side scuttle as shown in Fig. 5. The three $\frac{1}{4}$ " diameter fixing holes can be drilled using loudspeaker card ring as a template.

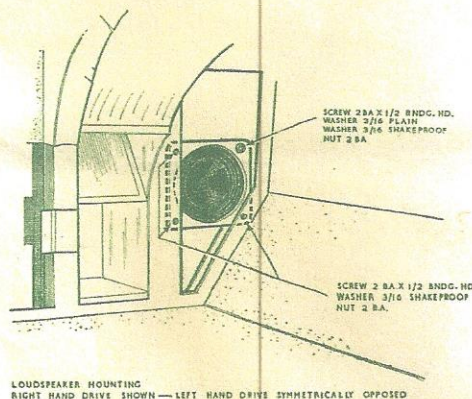


Fig. 5

Aerial Trimmer

Tune receiver to a weak signal on 1200 kc/s (250 metres) approximately and adjust aerial trimmer—small set screw on right-hand side of control unit—for maximum volume.

Replace all trim panels.

SUPPRESSION

NOTE: It is important to keep all wiring *i.e.* ignition and condenser leads as short as possible and to scrape to bare metal each point at which an earth connection is made.

1. Fit a 1 mfd. capacitor between dynamo output terminal on earth. Earth to dynamo mounting bracket.
2. Fit a 1 mfd. capacitor to 'SW' terminal on coil. Earth to coil mounting bracket.
3. Fit 5,000 ohm resistor in main H.T. lead as close to distributor as possible.