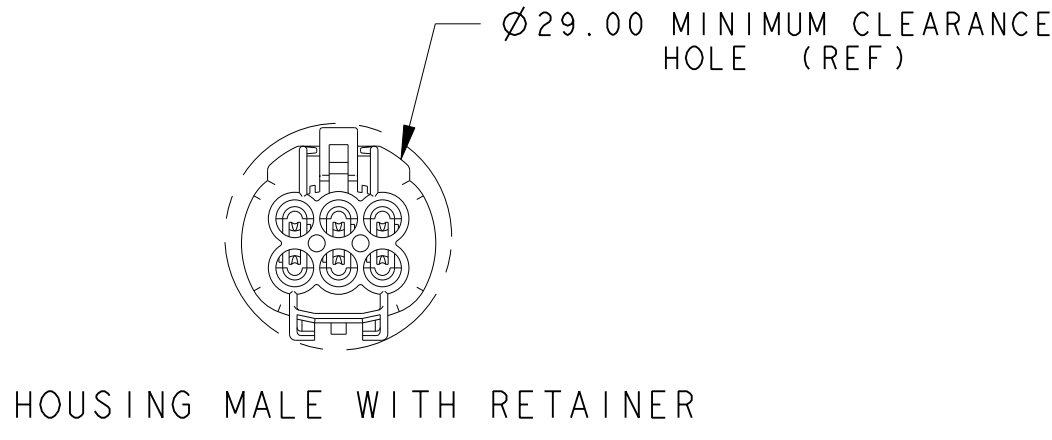
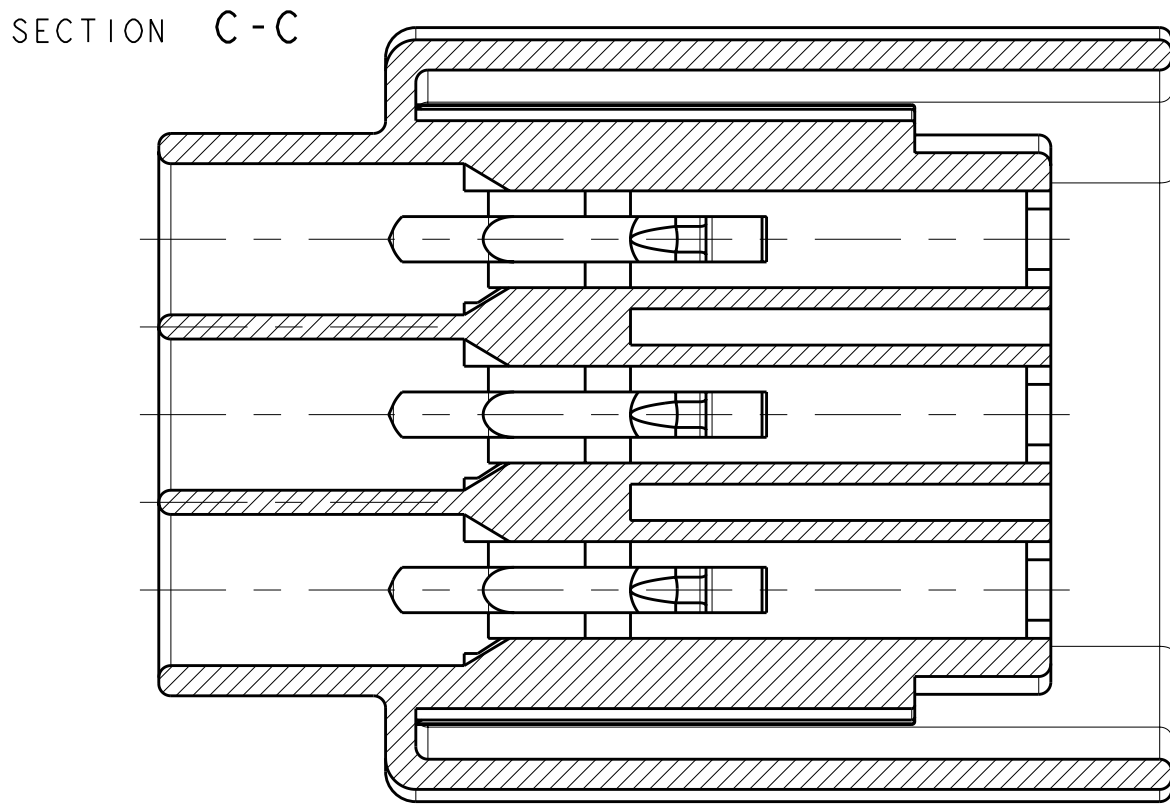


LOC	DIST	REV	DESCRIPTION	DATE	BY	APP
1	-	A1	EG00-2683-01	07FEB2002	CLD	JE
		A2	EG00-3105-01, DRW REVISED, SEALS UPDATED	07FEB2002	SS	JE
		A3	EG00-0399-02, ADD NATURAL VERSION	07FEB2002	CLD	JE
		A4	REDRAWN REVISED FOR ECR06-003008	21FEB2006	M.P.	R.M.
		A5	REDRAWN FOR ECR-08-011583	16MAY2008	D.S.	R.M.

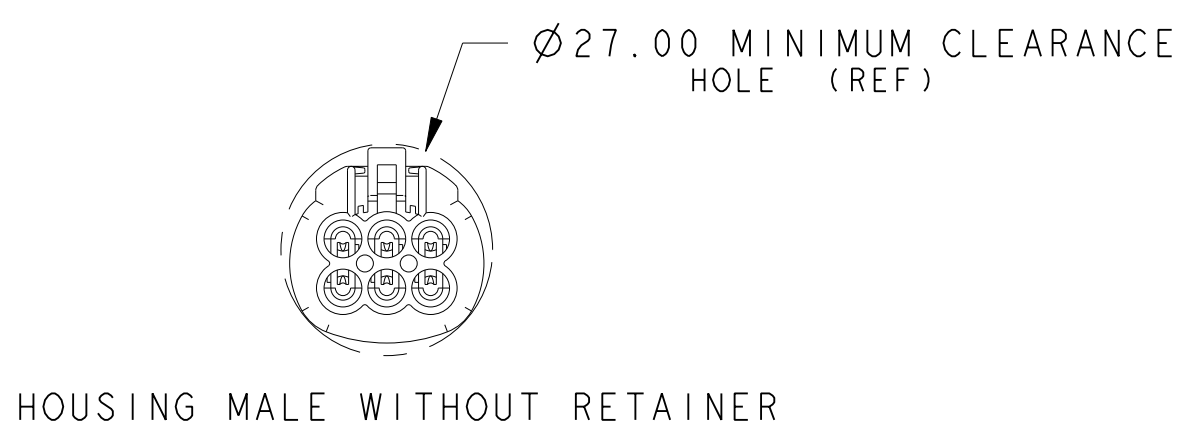
HOUSING

WATERPROOF / NON WATERPROOF



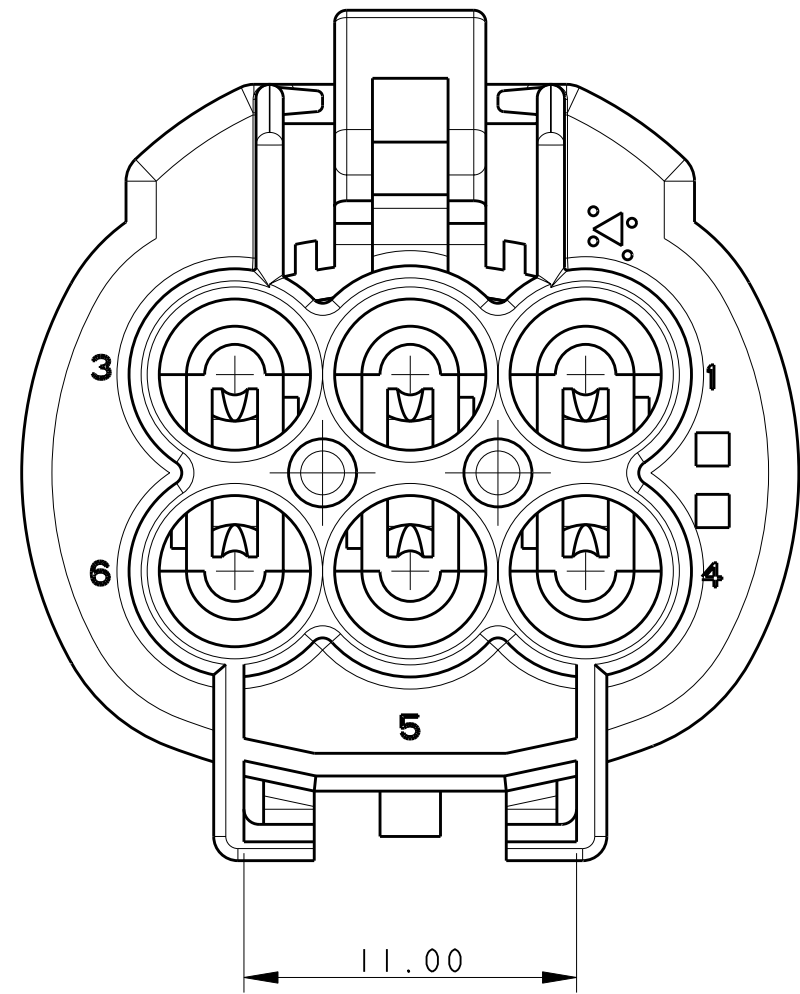
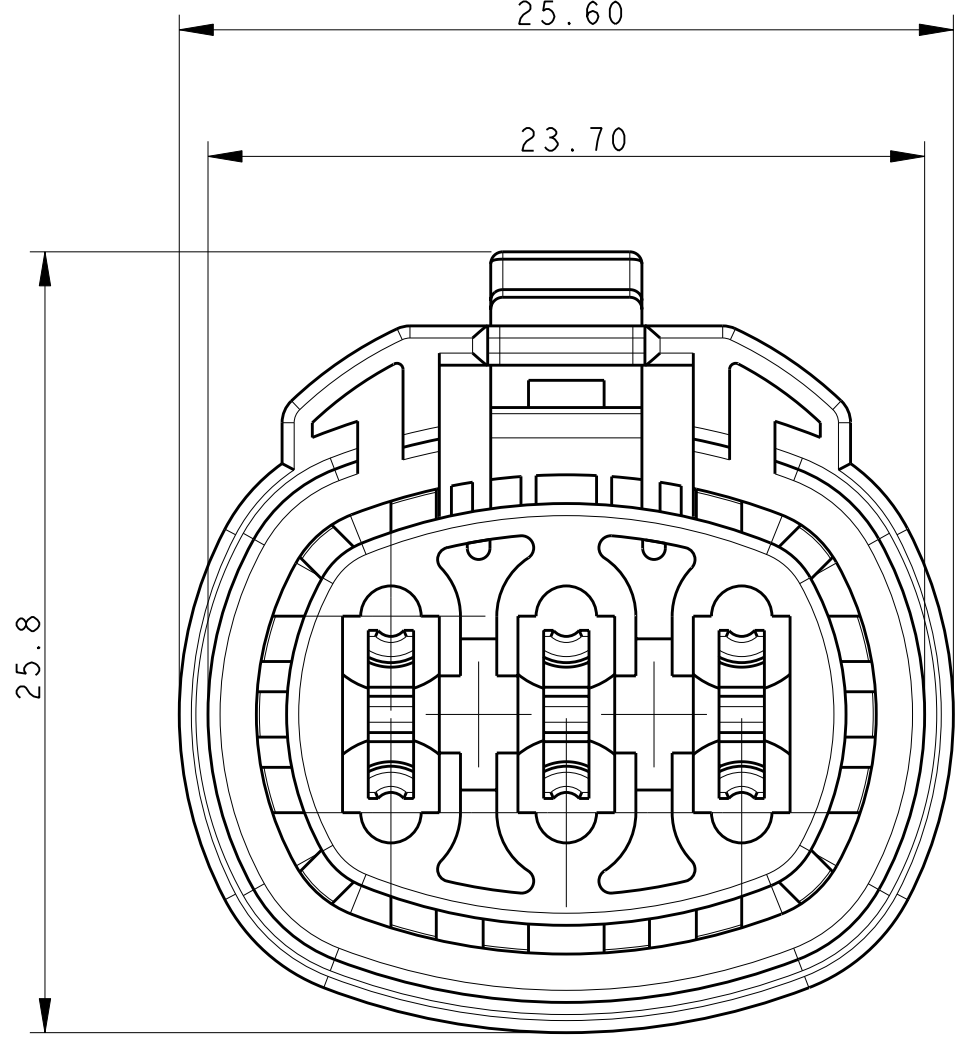
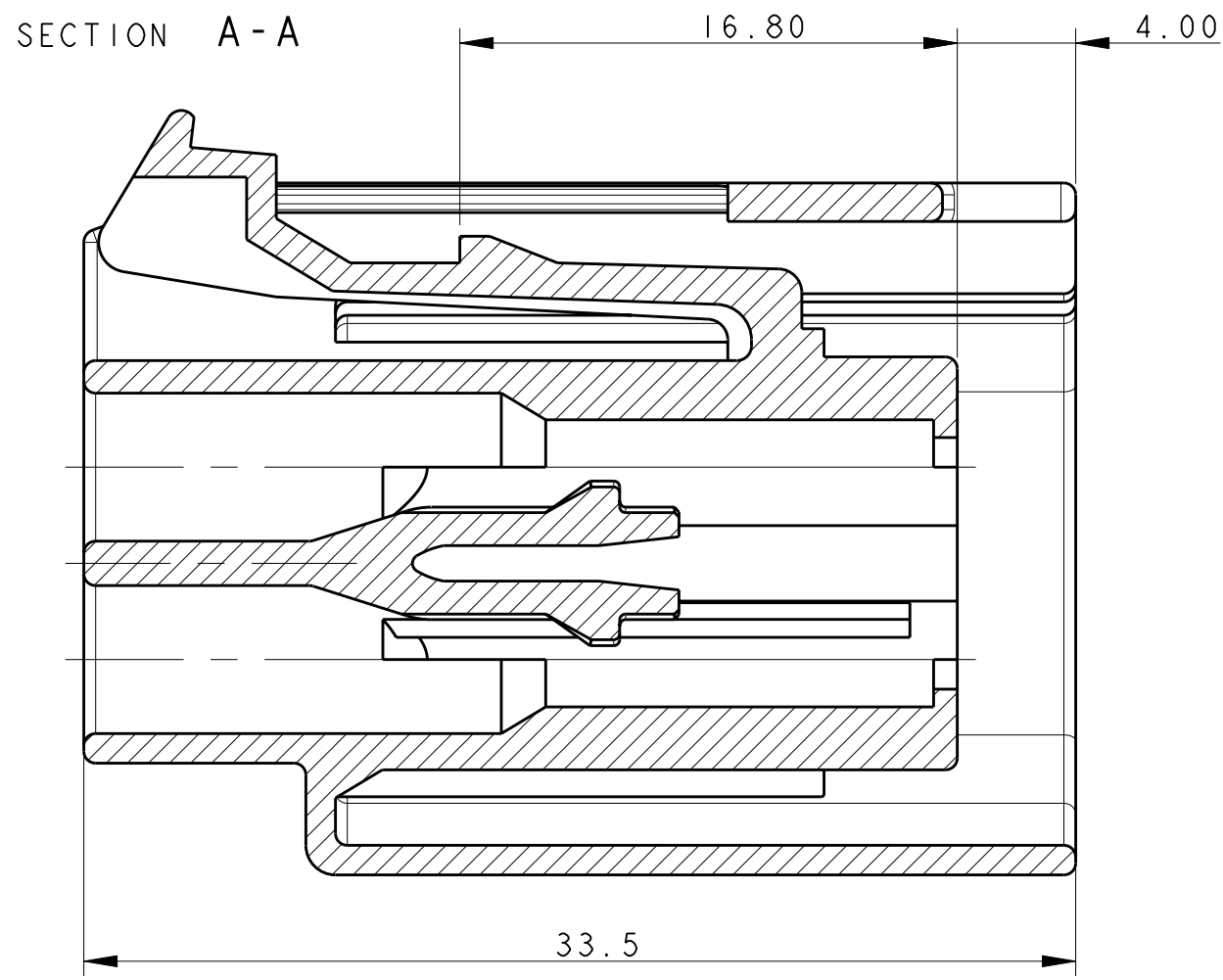
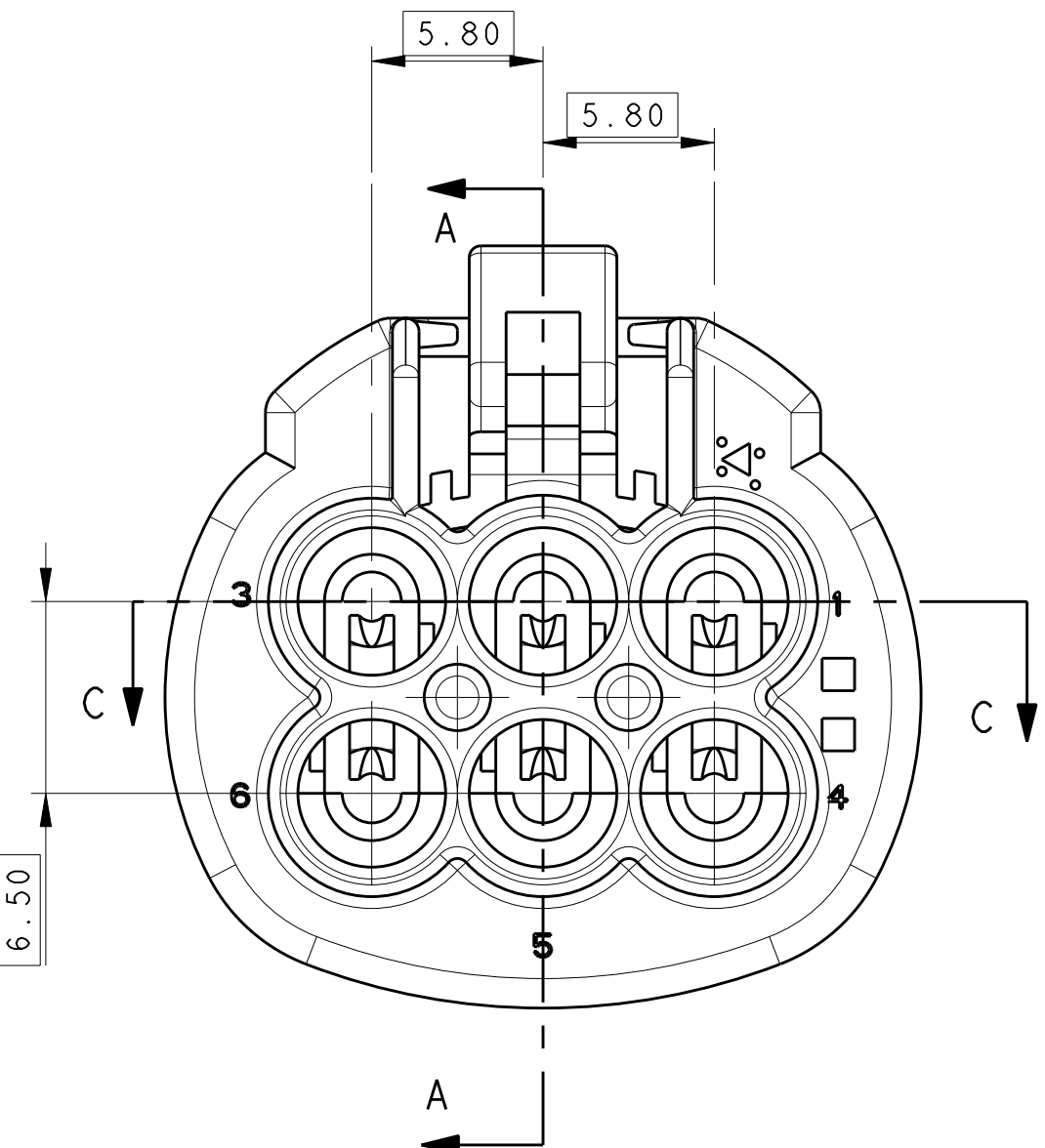
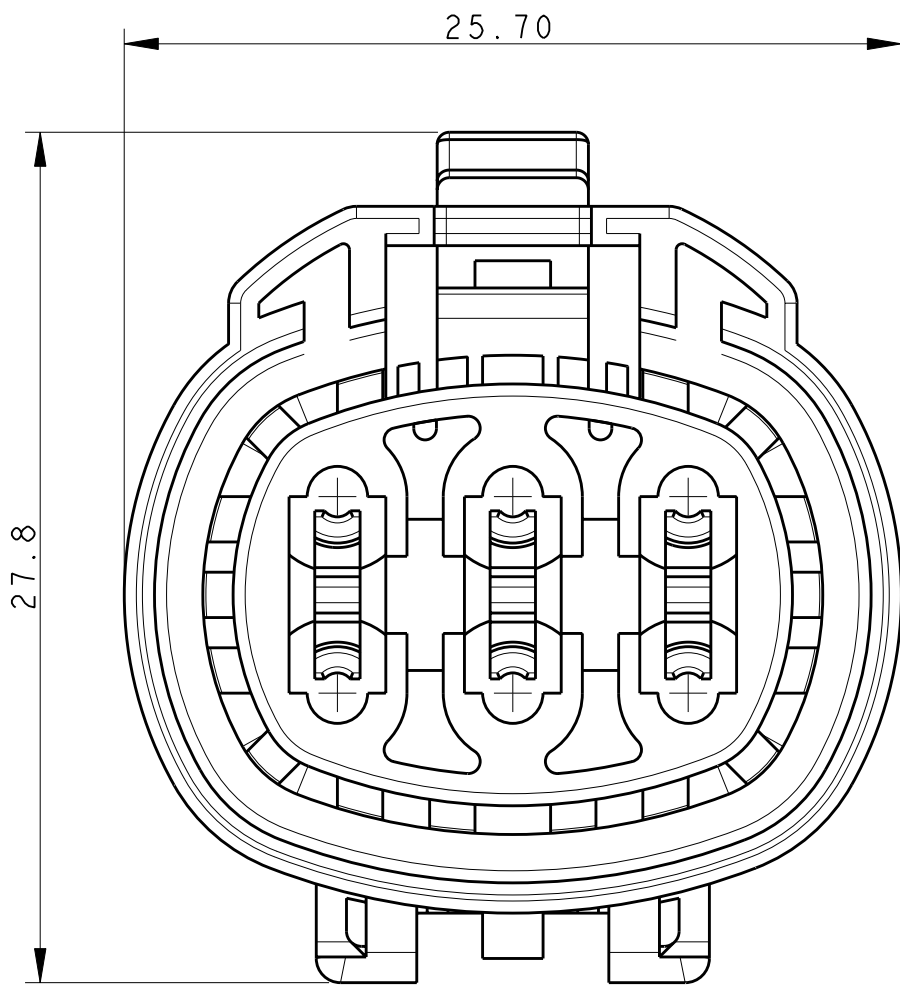
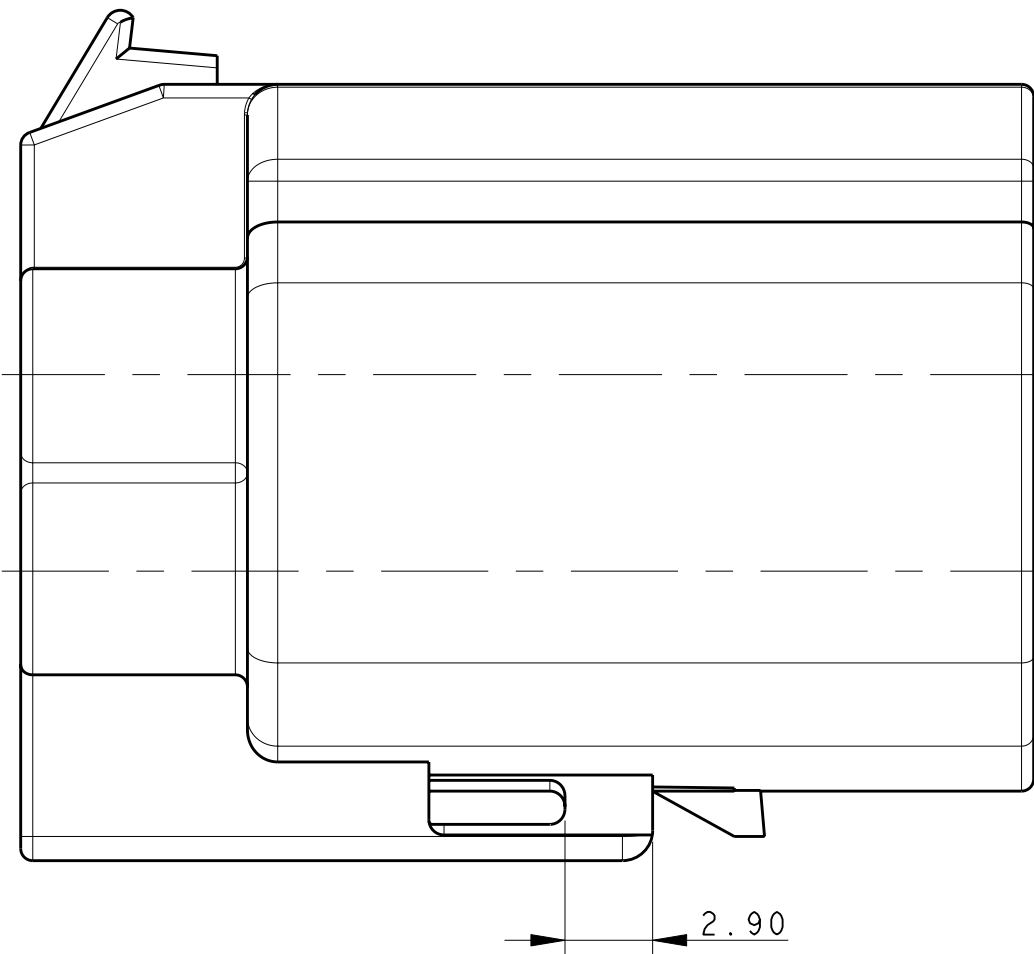
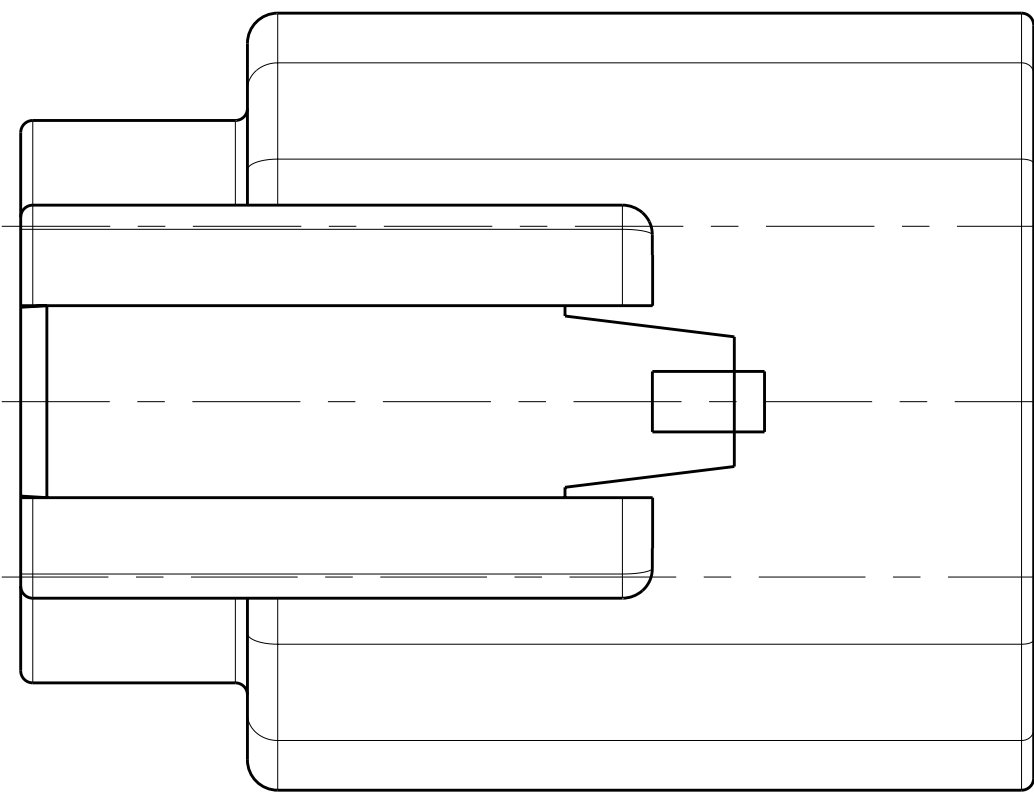
FULL SIZE VIEWS

SCALE 1.000

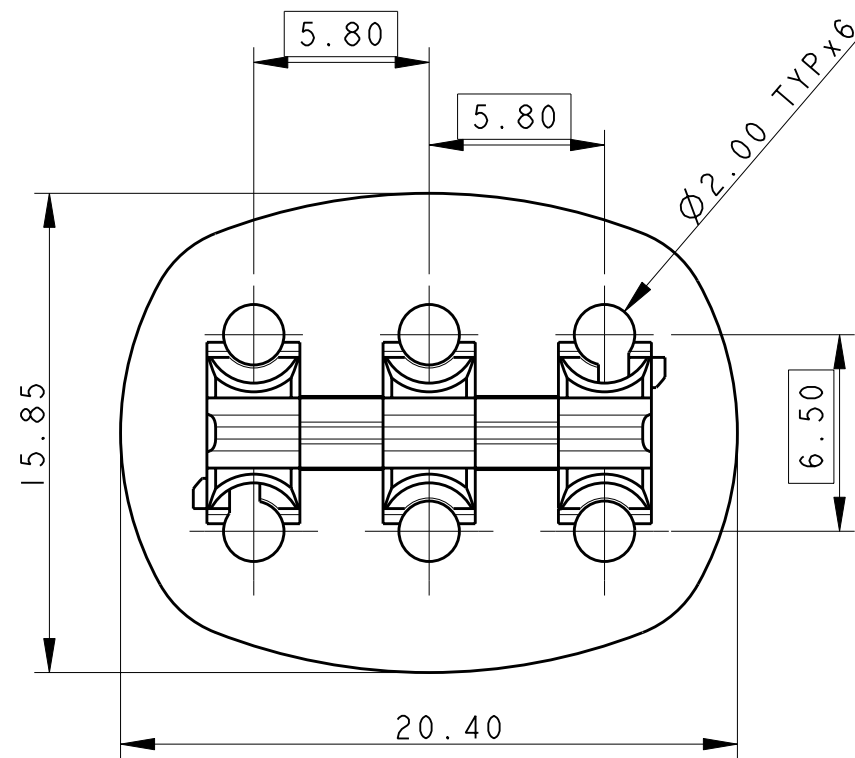


HOUSING WITH RETAINER

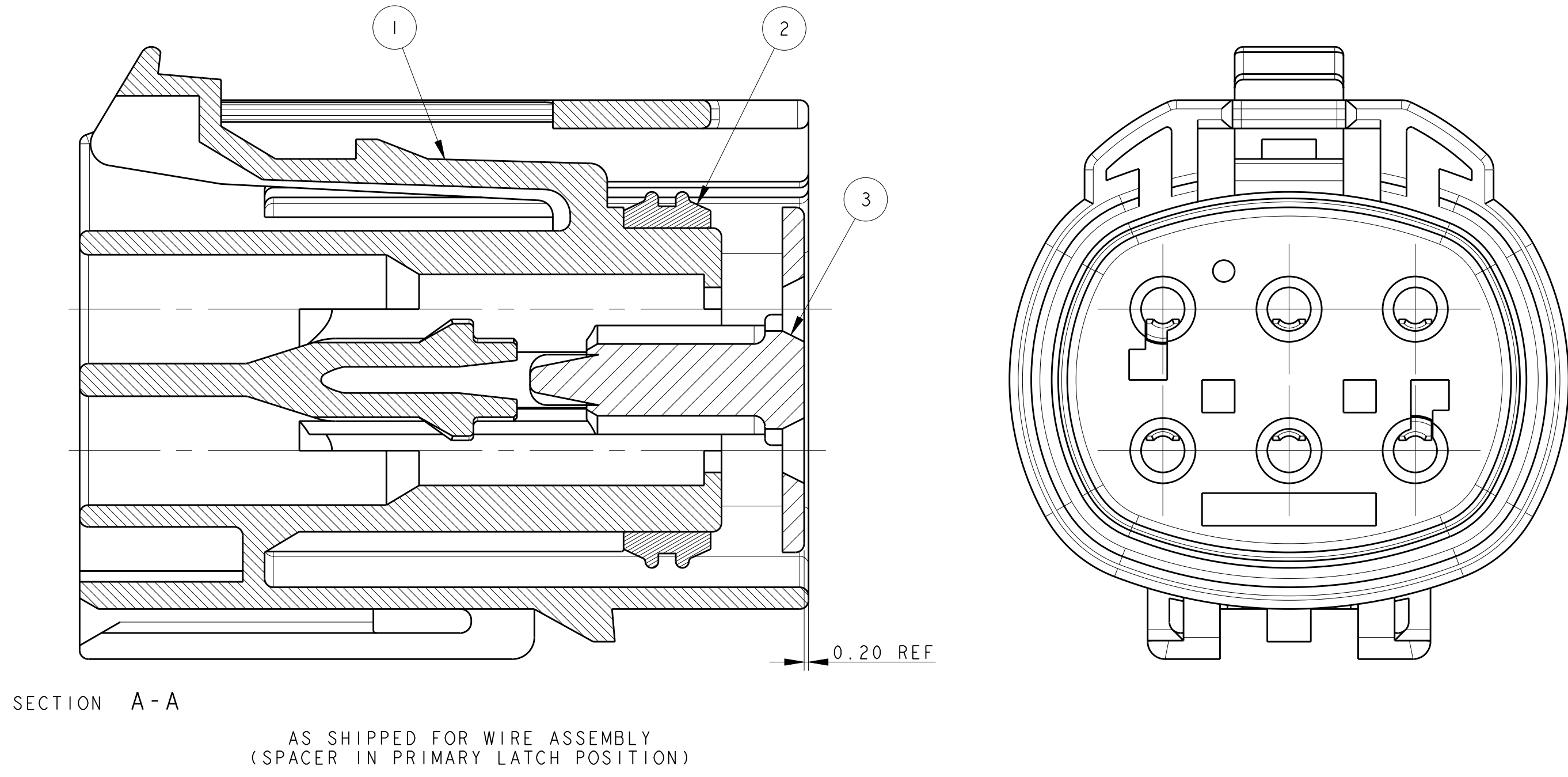
WATERPROOF / NON WATERPROOF



SPACER NOTES



						DESCRIPTION	ITEM
	I		I			HOUSING WITH RETAINER (BLACK)	1
I		I				HOUSING WITHOUT RETAINER (BLACK)	1
				I	I	HOUSING WITH RETAINER (NATURAL)	1
				I	I	HOUSING WITHOUT RETAINER (NATURAL)	1
I	I			I		SEAL (REDDISH BROWN)	2
I	I			I		SPACER (LIGHT BLUE)	3
						SPACER (RED)	3
4-1437710-0 REVA	4-1437710-1 REVA	4-1437710-2 REVA	4-1437710-3 REVA	4-1437710-4 REVA	0-148093-1 REVA	0-148093-2 REVA	0-148093-3 REVA

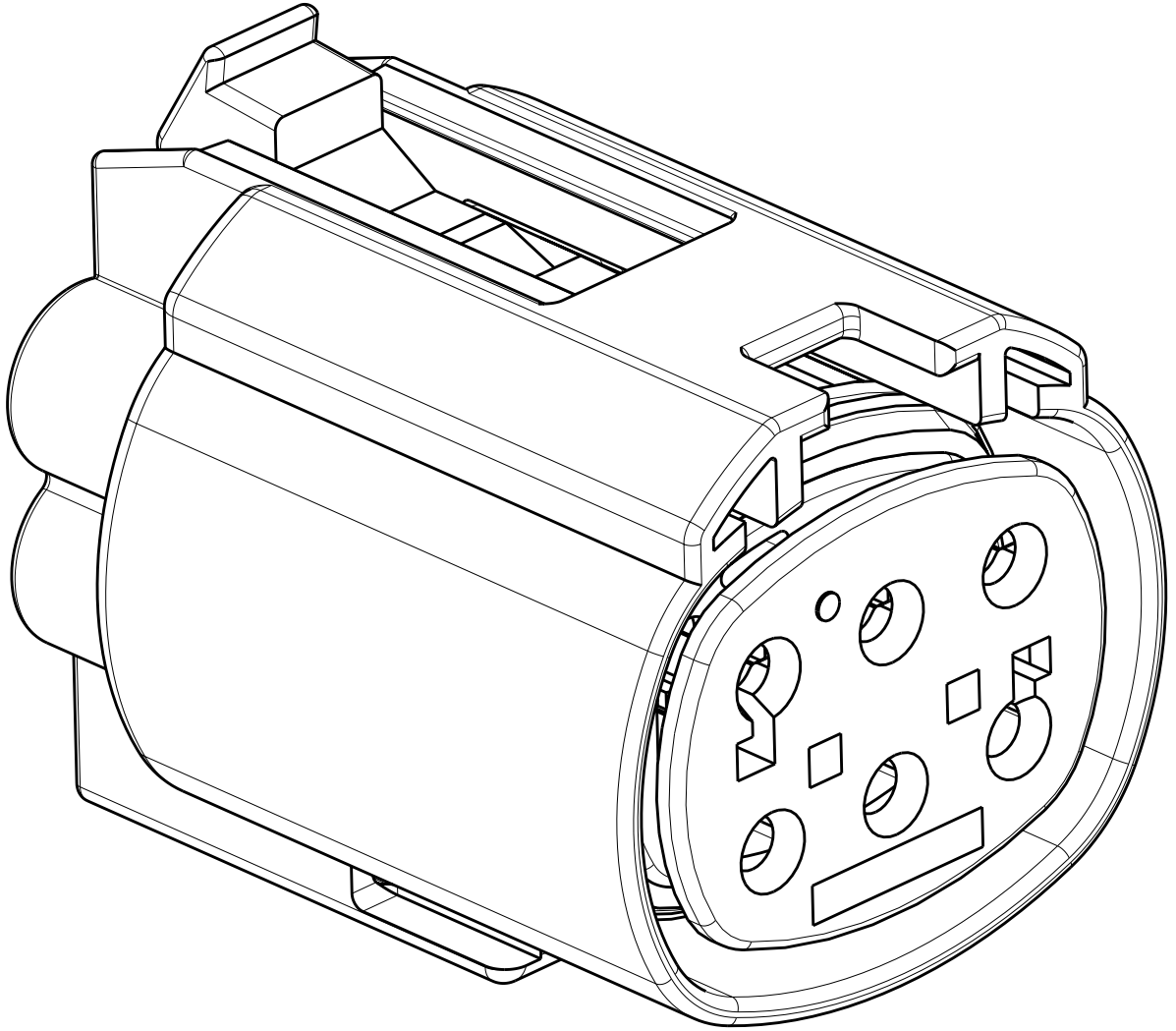


PART AS SUPPLIED				COMPONENTS			COLOURS			MATERIALS			SUITABLE FOR			MATING PARTS	
TYCO ELECTRONICS PART No.	DESCRIPTION	WATERPROOF	WEIGHT	1 HOUSING	2 SPACER	3 SEAL	1 HOUSING	2 SPACER	3 SEAL	1 HOUSING	2 SPACER	3 SEAL	TERMINAL FEMALE	WIRE SEAL	BLIND PLUG	TYCO ELECTRONICS PART No.	DESCRIPTION
4-1437710-0	6 WAY MALE CONNECTOR	YES	10.0 gr.	I	I	I	BLACK	LIGHT BLUE	REDDISH BROWN	PBTP 33% GF	PBTP 33% GF	SILICONE ELASTOMER	0-1437709-9 (0.22-0.35mm ²) GOLD PLATED 1-1437709-0 (0.50-1.00mm ²) GOLD PLATED 1-1437709-7 (1.50mm ²) GOLD PLATED 1-1437709-4 (0.22-0.35mm ²) TIN PLATED 1-1437709-5 (0.50-1.00mm ²) TIN PLATED 1-1437709-6 (1.50mm ²) TIN PLATED	1-1437713-1 (0.22-0.35) BLACK 1-1437713-2 (0.50-1.00) RED 1-1437713-3 (1.50) BLUE	1-1437713-4	2-1437712-0	6 WAY FEMALE CONNECTOR WATERPROOF
4-1437710-1	6 WAY MALE CONNECTOR WITH RETAINER		10.8 gr.	I	I	I							RED				0-1437709-9 (0.22-0.35mm ²) GOLD PLATED 1-1437709-0 (0.50-1.00mm ²) GOLD PLATED 1-1437709-7 (1.50mm ²) GOLD PLATED 1-1437709-4 (0.22-0.35mm ²) TIN PLATED 1-1437709-5 (0.50-1.00mm ²) TIN PLATED 1-1437709-6 (1.50mm ²) TIN PLATED
4-1437710-2	6 WAY MALE CONNECTOR	NO	9.8 gr.	I	I												
4-1437710-3	6 WAY MALE CONNECTOR WITH RETAINER		10.6 gr.	I	I												

PART AS SUPPLIED				COMPONENTS			COLOURS			MATERIALS			SUITABLE FOR			MATING PARTS	
TYCO ELECTRONICS PART No.	DESCRIPTION	WATERPROOF	WEIGHT	1 HOUSING	2 SPACER	3 SEAL	1 HOUSING	2 SPACER	3 SEAL	1 HOUSING	2 SPACER	3 SEAL	TERMINAL FEMALE	WIRE SEAL	BLIND PLUG	TYCO ELECTRONICS PART No.	DESCRIPTION
0-1418093-3	6 WAY MALE CONNECTOR	YES	10.0 gr.	I	I	I	NATURAL	LIGHT BLUE	REDDISH BROWN	PBTP 33% GF	PBTP 33% GF	SILICONE ELASTOMER	0-1437709-9 (0.22-0.35mm ²) GOLD PLATED 1-1437709-0 (0.50-1.00mm ²) GOLD PLATED 1-1437709-7 (1.50mm ²) GOLD PLATED 1-1437709-4 (0.22-0.35mm ²) TIN PLATED 1-1437709-5 (0.50-1.00mm ²) TIN PLATED 1-1437709-6 (1.50mm ²) TIN PLATED	1-1437713-1 (0.22-0.35) BLACK 1-1437713-2 (0.50-1.00) RED 1-1437713-3 (1.50) BLUE	1-1437713-4	2-1437712-0	6 WAY FEMALE CONNECTOR WATERPROOF
4-1437710-4	6 WAY MALE CONNECTOR WITH RETAINER		10.8 gr.	I	I	I							RED				
0-1418093-1	6 WAY MALE CONNECTOR	NO	9.8 gr.	I	I												
0-1418093-2	6 WAY MALE CONNECTOR WITH RETAINER		10.6 gr.	I	I												

MATING PARTS	
TYCO ELECTRONICS PART No.	DESCRIPTION
2-1437712-0	6 WAY FEMALE CONNECTOR WATERPROOF
2-1437712-1	6 WAY FEMALE CONNECTOR NON WATERPROOF

MATING PARTS	
TYCO ELECTRONICS PART No.	DESCRIPTION
2-1437712-0	6 WAY FEMALE CONNECTOR WATERPROOF
2-1437712-1	6 WAY FEMALE CONNECTOR NON WATERPROOF



- NOTES UNLESS OTHERWISE SPECIFIED:
- SEE CHART FOR MATING PART NUMBERS.
 - THE CONNECTOR WITH RETAINER MOUNTING FEATURE IS DESIGNED TO PASS THROUGH A Ø 29.00mm MIN. HOLE AND WITHOUT RETAINER MOUNTING FEATURE THROUGH A Ø27.00mm MIN HOLE.

DIMENSIONS		TOLERANCES UNLESS OTHERWISE SPECIFIED:		REV	DATE	BY	APP	Tyco Electronics		Tyco Electronics AMP Italia S.p.A.	
0.15mm		0.15mm		M. PALMA	21FEB2006	R. MARTIN	21FEB2006	A. GENTA		C.so F.lli Cervi 15, Collegno (TO)	
0.15mm		0.15mm		PRODUCT SPEC		108-20269		NAME		1.6mm SYSTEM	
0.15mm		0.15mm		APPLICATION SPEC		411-20111		SIZE		6 WAYS CONNECTOR	
0.15mm		0.15mm		REWORK		SEE TABLES		CAGE CODE		DRAWING NO	
0.15mm		0.15mm		CUSTOMER DRAWING		A0		00779		C=1418075	
0.15mm		0.15mm		SCALE		4:1		SHEET		2	
0.15mm		0.15mm		REV		A5		RESTRICTED TO		-	

Mouser Electronics

Authorized Distributor

Click to View Pricing, Inventory, Delivery & Lifecycle Information:

[TE Connectivity:](#)

[4-1437710-2](#)